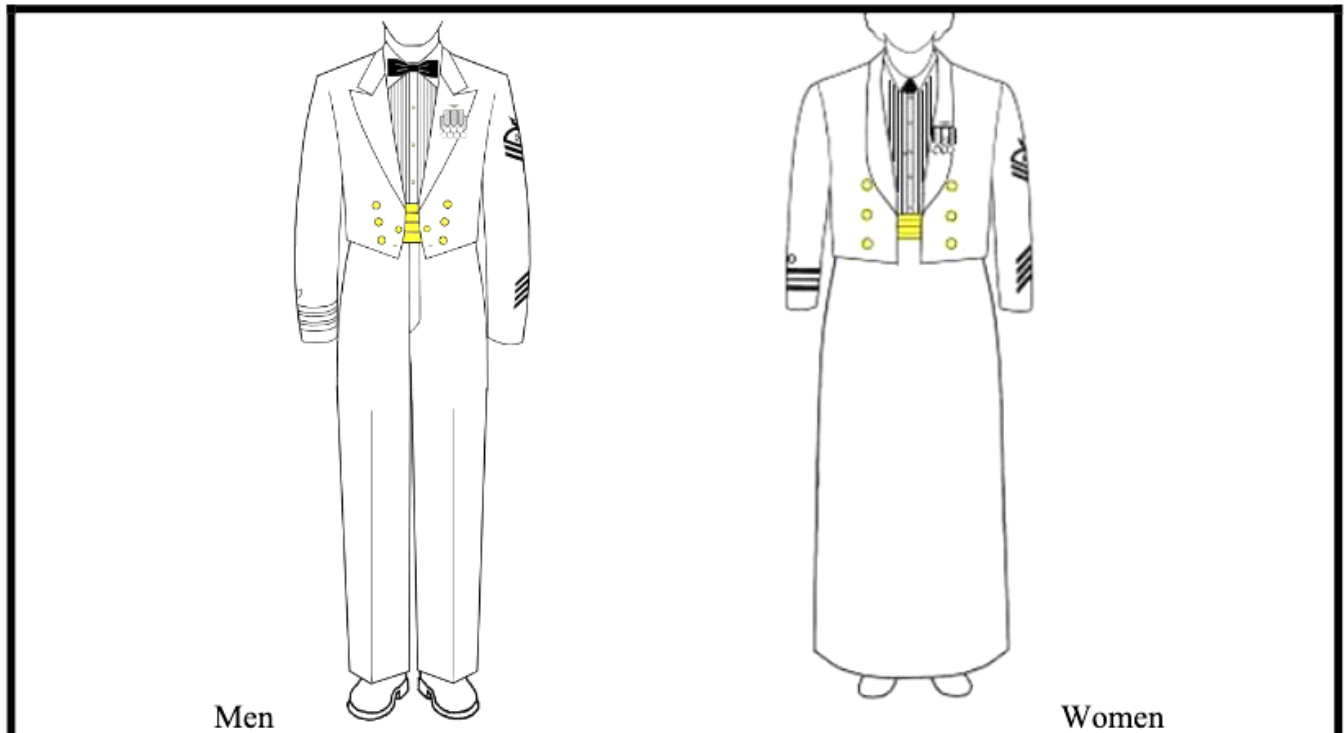


### 3.B.2. Dinner Dress Blue Jacket (DDBJ)



Authorized Uniform Items	Additional Comments
Dinner Dress Blue Jacket	This jacket is the Navy Dinner Dress Blue Jacket that is Black in color. (Men wear men's version. Women wear women's version.)
Dress Coat Buttons	Substitute CG buttons for Navy buttons for both men and women.
Blue Evening Trousers	For men. High waist. Black in color.
Blue Formal Skirt/Slacks	For women. Skirt or slacks authorized. Black in color.
White Shirt	Men and Women: Pleated White shirt - A soft fronted long sleeve shirt with buttons and small pleats down the front. Men only: Standard Long Sleeve shirt is optional.
Tie	Men: black bow tie. Women: black formal dress necktie.
Gold Cummerbund	Men and women. Pleats up.
Small Medals	Worn 3" below left lapel notch. Women: 1/3 of distance between shoulder & bottom hem of jacket. With Multiple medals, medals may overlap the lapel and extend onto the chest area. Backing must be affixed through both lapel and jacket.
Miniature Qualification Insignia, Devices, and Small Identification Badges	See Chapter 4.B.4 for proper wear instructions.
White Gloves	Worn only when wearing outerwear. (Officers Only)
White Suspenders	For men.
Black Socks or Hosiery	Socks are worn with oxfords; hosiery with pumps or flats.